

TONE



瓦楞纸数码打印机

Digital Printer of Corrugated Paperboard

外观设计简洁大方，科技感强
人性化，便于操作

SIMPLE DESIGN·SENNOTECH
HUMANIZATION·EASY OPERATION

广东台一精工机械有限公司
GUANGDONG TAIYI PRECISION MACHINERY

地址：广东省佛山市三水中心科技工业区西南园规划A区内46-2号(F1)
Add:F1/46-2,A District South-West,San Shui Center Technology IndutryArea,
Fo Shan City,Guang Dong,China

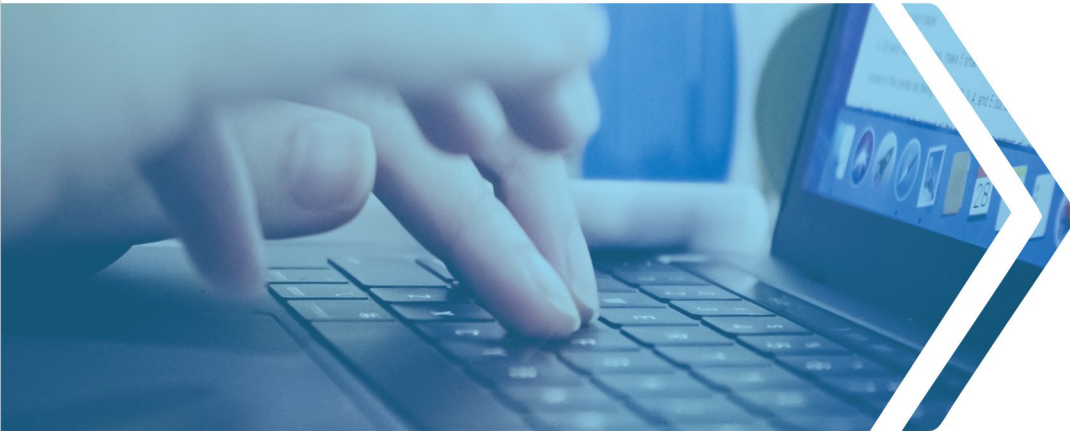
电话 (Tel) : 86-757-87812228/87787268

传真 (Fax) : 86-757-87783968

http : //www.gdtaiyi.cn

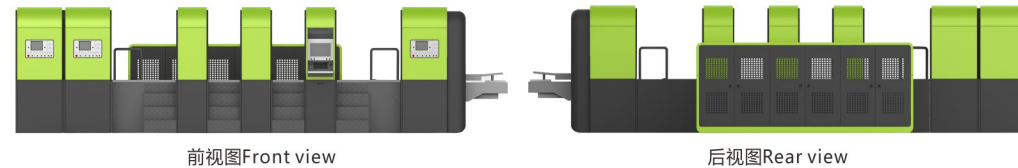
E-mail : taiyi@gdtaiyi.cn taiyimachine@gdtaiyi.cn

智在台一·一触即印
INTELLIGENT MACHINE, TOUCH AND PRINT
SINCE 2005



技术优势 Technology advantages

- 最高超过每分钟60米的直线打印速度
Max speed of straight printing: 60 meters per minute;
- 400dpi; 可变墨滴技术
Pixel: 400dpi, changeable ink-drop technology.
- 适用于绝大多数瓦楞纸
Suitable for most of corrugated paperboard
- 颜色管理方便、简单、快捷
Easy and simple color management
- 色域更广泛
Extensive color gamut
- 墨水统计功能
Statistical function of ink
- 较低的维护和人工成本
Lower cost of maintenance and labor
- 参数调整快捷
Fast parameter adjust
- 具备自动清洗功能
Auto cleaning function
- 实时数据统计
Real-time statistics
- 图像过渡柔和, 表现更有张力
Soft image transition, better performance.
- 非接触式印刷, 操作简单
Contactless printing, easy operation.
- 可以按照订单进行多个计划排产, 订单可以是最小单位
Multiple productions as per orders is available, Quantity of each order can be smallest unit
- 可进行大幅面印刷和多色印刷, 印刷效果可与胶印、柔印媲美
Large-width with multiple colors printing is available, printing quality as good as offset printing and flexo printing
- 无需制版, 版面内容修改灵活
Printing plate is not required, printing content is changeable
- 采用水性墨水, 对环境污染小
Water-based ink used, less pollution



主要技术参数 Main Specifications

项目 Description	型号Model		
	T-GP1600	T-GP2100	T-GP2600
最大打印宽度Max Printing Width (mm)	1548	2080	2580
最小进纸尺寸Min Feeding Size (mm)	400X650	400X650	400X650
最大进纸尺寸Max Feeding Size (mm)	1200X1600	1600X2500	1600X2800
喷头种类Print Head	工业级富士喷头SG1024/SG1536		
墨水种类Ink	环保水性墨水Environmental-friendly water-base ink / Dye ink		
最高打印速度Max Speed (m/min)	100	100	100
喷印精度Print Resolution (dpi)	400/600 (多种分辨率可选) (Multiple resolutions are optional)		
单通道最大喷头数量 Max Print Head Quantity of Single Color (pcs)	24	32	40
颜色通道数量Nos. of Color	4+ (可扩展) (Inceasable)		
墨水固化方式Ink Dry	自干/烘干Self-Drying/Infrared Drying		
喷头到介质距离 Distance Between Print Head and Medium (mm)	2mm(根据不同纸型调整) (Adjusted according to different paperboard)		
适应打印面纸种类 Adapt to the type of printing paper	各类瓦楞纸板 (白卡、黄卡等) All kinds of corrugated paperboard		
介质厚度Medium Thickness (mm)	1.5-15		
图像处理软件Software of Image Management	NEOSTAMPA		
图像格式Image Format	PDF、TIFF、AI等格式(PDF、TIFF、AI and other main formats)		
功率Power (kw)	80	90	110
机器重量Weight (kgs)	8	10	12

*可选配900/1200/1600开槽部、模切部, 实现数码印刷开槽模切一体化生产。
900/1200/1600 Slotter & Rotary Die-cutter are optional, to achieve digital printing slotting die-cutting integrated production.

主要特点 Main Features

数码打印采用按需喷墨的方式。相较于现有的传统工业打印技术, 数码打印是一种无接触打印技术, 它可以实现在各种类型的材料表面进行打印, 而不会出现类似重影、压坑、套印不准、捕捉不准以及许多传统打印技术引起的典型问题。无需制版、打印灵活、没有最小批量限制。

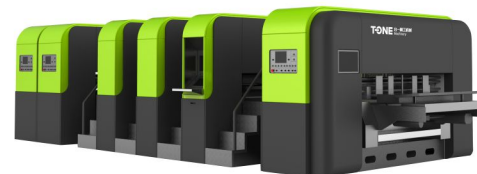
Digital printer is applied with Drop-on-Demand printing technology. Compared to traditional printing technology, digital printing is a contactless technology. It can be applied to a variety of surfaces of different materials without printing shadow, flute damage, inaccurate registration or other typical problems caused by traditional printing technology. Digital printer is a flexible printing technology, no requirement of printing plates and quantity no limit.



左视图Left view



右视图Right view



侧视图Side view